

**Distributor to Industry, Inc.**  
 1017 East Murdock Street  
 Wichita, Kansas 67214  
**Toll Free:** 800.835.2838  
**Phone:** 316.263.9511  
**Email:** [sales@trydti.com](mailto:sales@trydti.com) • **Website:** [www.trydti.com](http://www.trydti.com)

## Rexroth 2-HA-1 Pilotair® Single Unit Valves, 3-Way Handle Operated

The model 2-HA-1 "A" PILOTAIR Valve is a panel mounted, handle operated 3-way valve with 1/4" NPT inlet and outlet ports. It contains a spring opposed detent cam to hold the handle in either of its two extreme positions. The 2-HA-1L model is available with an additional external handle latch which requires manual release to insure against unintentional operation. The 2-HA-1W model is spring returned from position 2 to center position, which is the same as position 1 (normally closed).

The model 2-HA-1R, 2-HA-1LR and 2-HA-1RW "A" PILOTAIR Valves are the same as the 2-HA-1 and 2-HA-1L models except that the cam is reversed to obtain pull instead of push operation. The 2-HA-1R model may also be mounted with the handle on the left hand side for tandem push operation with the 2-HA-1 model.

The Panel-Mounted "A" PILOTAIR Valve is a poppet-type pneumatic directional control valve consisting of a cam housing portion and a valve portion containing from one to four 3-way valve units.

The "A" PILOTAIR Valves' streamlined compact design makes them especially suited for deluxe panel mountings such as in consoles or control panels. They can be mounted in either horizontal or vertical panels. The internal parts are enclosed to make them ideal for outdoors installations or other unfavorable working conditions.

### Operating Versatility

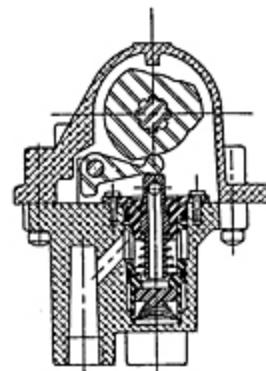
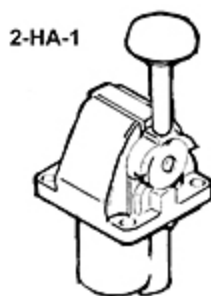
Versatility has been designed into the operating cams. By reversing, rotating and rearranging these all-purpose cams, all the listed combinations can be made with a minimum of parts. Single unit valves for 3-way operation may be normally open or normally closed. The two unit valves have two, three, or five positions of operation as do the three and four unit valves. (See operation.) Detents can be had for two, three or five positions, or handle may be spring returned to center for three position operation.

### Operation

In release position, as shown, the valve disc seats on the inlet valve seat and seals the passage from the inlet to the outlet port. The outlet port is vented to atmosphere through the center of the plunger.

As the plunger is forced downward by the cam force it seats on the valve disc. This seals the passage between the outlet port and atmosphere.

Further downward travel of the plunger unseats the valve disc from the inlet valve seat and allows inlet air pressure to flow to the outlet port.



Results 1 - 12 of 12

<u>Item #</u>	<u>Old Part #</u>	<u>Configuration</u>	<u>Model</u>	<u>Type</u>	<u>Length</u>
<a href="#">R431004994</a>	P 059331 P -059331-00000 P 59331	Standard	2-HA-1	With Detents	2 3/4 in.

P059331  
P59331

<a href="#">R431004996</a>	P -059331-00002 P 059331-2 P 59331-2 P059331-2 P59331-2	Chrome Plated Cover and Hub	2-HA-1	With Detents	2 3/4 in.
<a href="#">R431006456</a>	P 064533 P -064533-00000 P 64533 P064533 P64533	Long Handle	2-HA-1	With Detents	2 3/4 in.
<a href="#">R431004997</a>	P -059332-00001 P 059332-1 P 59332-1 P059332-1 P59332-1	Standard	2-HA-1L	With Latch	2 3/4 in.
<a href="#">R431004999</a>	P -059332-00003 P 059332-3 P 59332-3 P059332-3 P59332-3	Chrome Plated Cover and Hub	2-HA-1L	With Latch	2 3/4 in.
<a href="#">R431004998</a>	P -059332-00002 P 059332-2 P 59332-2 P059332-2 P59332-2	Black Coated Cover and Hub	2-HA-1L	With Latch	2 3/4 in.
<a href="#">R431005000</a>	P 059333 P -059333-00000 P 59333 P059333 P59333	Standard	2-HA-1R	With Detents	2 3/4 in.
<a href="#">R431006571</a>	P 065207 P -065207-00000 P 65207 P065207 P65207	Black Coated Cover and Hub	2-HA-1R	With Detents	2 3/4 in.
<a href="#">R431005001</a>	P -059334-00001 P 059334-1 P 59334-1 P059334-1 P59334-1	Standard	2-HA-1LR	With Latch	2 3/4 in.
<a href="#">R431005002</a>	P -059334-00003 P 059334-3 P 59334-3 P059334-3 P59334-3	Chrome Plated Cover and Hub	2-HA-1LR	With Latch	2 3/4 in.
<a href="#">R431005660</a>	P 061083 P -061083-00000 P 61083 P061083 P61083	Spring Returned to Center Position	2-HA-1W	Spring Returned to Center	2 3/4 in.
<a href="#">R431005661</a>	P 061090 P -061090-00000 P 61090 P061090 P61090	Spring Returned to Center Position	2-HA-1RW	Spring Returned to Center	2 3/4 in.