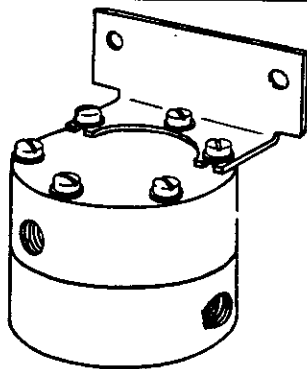




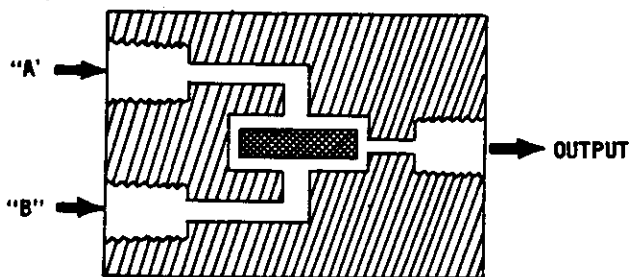
## SERVICE INSTRUCTIONS HIGH PRESSURE SELECTOR RELAY MODELS 58S AND 58SH



### GENERAL INFORMATION AND OPERATION

The Moore High Pressure Selector Relay selects the higher of two signals and releases it directly to the next element of an instrument circuit. There is no retransmission which means there will be no time delay caused by this relay.

As shown in the schematic (Figure 1), input pressure "A" is directed to the top of the flapper and input pressure "B" to the bottom. When input pressure "A" exceeds input pressure "B" the flapper moves down, closes the "B" input air passage, and permits the greater "A" input pressure to pass through to the output. The reverse occurs when input pressure "B" is greater.

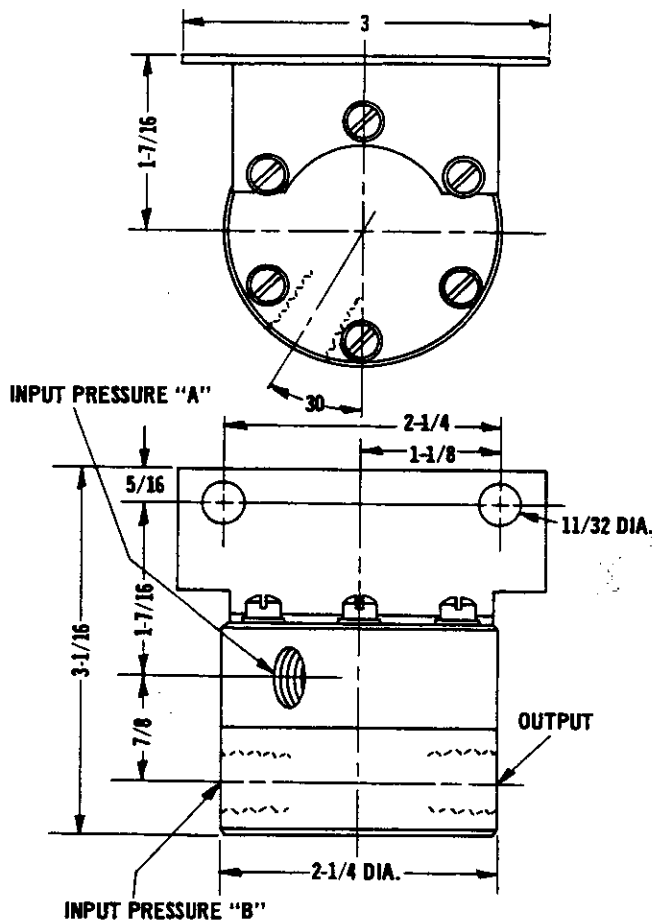


**FIGURE 1 SCHEMATIC**

Model 58S is supplied with a Neoprene flapper and is limited to maximum input pressures of 30 psi. Model 58SH is supplied with a Teflon flapper and is limited to maximum input pressures of 100 psi. Model 58SH can be used for pressures below 30 psi but small leaks from an input, past the flapper and to the output, may occur.

### INSTALLATION

Install the High Pressure Selector Relay in accordance with Figure 2. The relay has three connections; INPUT A, INPUT B, AND OUTPUT. No supply connection is required, nor are there any adjustments to be made



ALL CONNECTIONS ARE 1/4 N.P.T.

**FIGURE 2 INSTALLATION**

### MAINTENANCE

Because of comparatively large ports in these relays, chances of clogging are remote.

To disassemble, remove the six body screws and separate the top and bottom housings. Remove the flapper from the bottom housing.

Before reassembling, inspect the flapper for wear and the "O" ring for damage. Clean the flapper and flapper seats in the top and bottom housings.

Reassemble the relay using the installation and parts drawings.

No lubrication of any type is required.

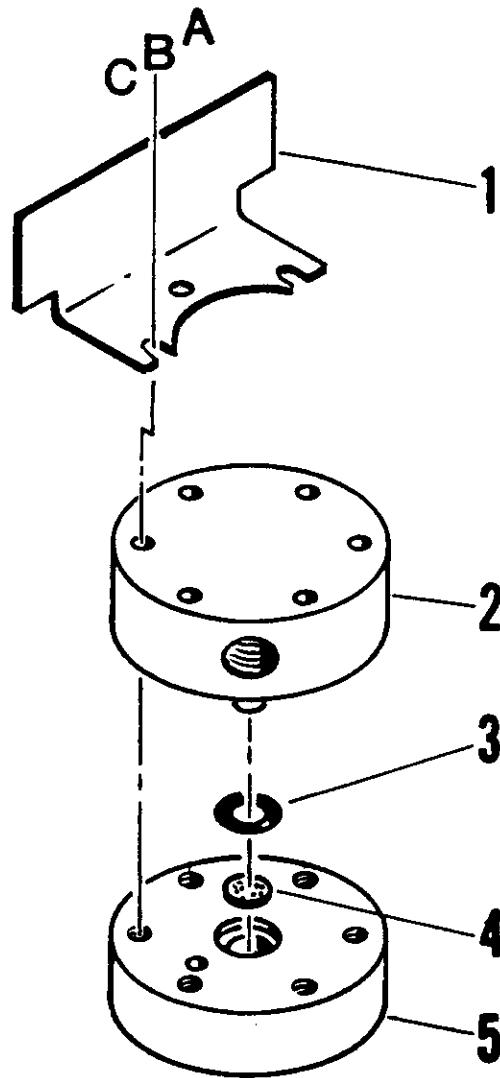
# PARTS LIST



## HIGH PRESSURE SELECTOR

Drawing No. 12530-20

MODELS	B/M
58S	12530S5
58SH	12530-18S4



Item	Part No.	Description	Req'd
1	10963-73	Mounting Bracket	1
2	12530-12	Top Housing	1
*3	2938-18	"O" Ring	1
*4a	12530-13	Flapper 0-30 psi (Model 58S)	1
*4b	12530-17	Flapper 0-100 (Model 58SH)	1
5	12530-11	Bottom Housing	1
A	1-2665	#10-32 x 1-1/4" Lg. Fil. Hd. Screw	6
B	1-7288	#10 Lockwasher	6
C	1-7445	#10 Flatwasher	2

\* Recommended On-Hand Spare Parts. Always Specify Range, Serial No., or Other Nameplate Information When Ordering Spare Parts.